



# PARTS LIST

## BRUSHCUTTERS

### BCZ2600DL

**NOTE :**

1. Use KOMATSU ZENOAH genuine parts as specified in the parts list for repair and/or replacement.
2. KOMATSU ZENOAH does not warrant the machines, which have been damaged by the use of any parts other than those specified by the company.
3. When placing parts orders for repair and/or replacement, check if the model name and the serial number are applicable to those specified in the parts list, then use parts number described in the parts list.
4. The contents described in the parts list are accurate as of the date and may change due to improvement.
5. The parts for the machine shall be supplied ten (10) years after the machine is discontinued. [It is possible that some specific parts may be subject to change of their delivery term and list price within the limit of ten (10) years after the machine is discontinued. It is also possible that some parts may be available even after the limit of ten (10) years.]

APPLICABLE SERIAL NUMBERS:

000101 and up

February 2000

Fig.1 CUTTER GROUP

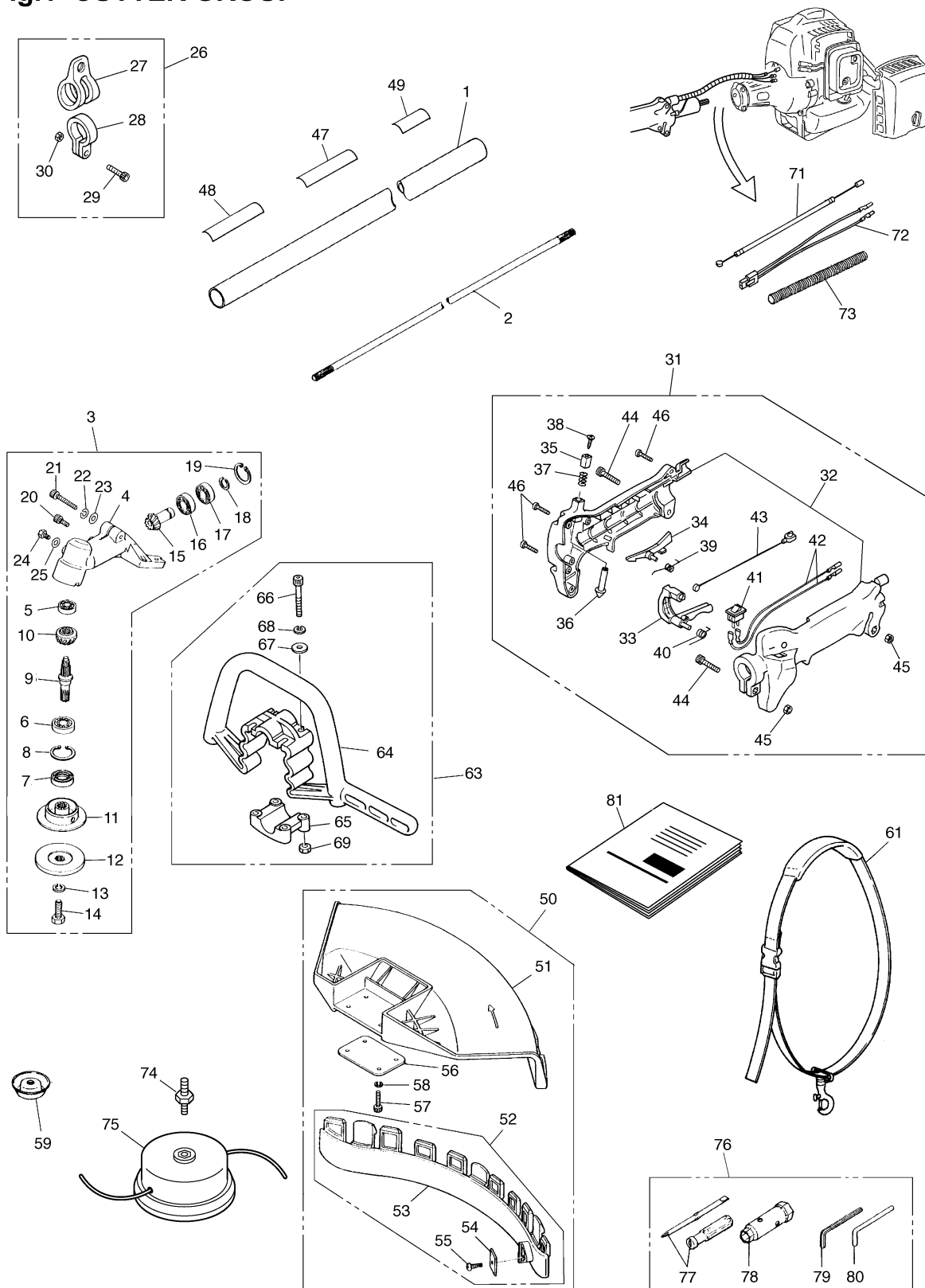


Fig.1 CUTTER GROUP

Key#	PART NUMBER	DESCRIPTION	Q'TY /UNIT	NOTE	Key#	PART NUMBER	DESCRIPTION	Q'TY /UNIT	NOTE
1	D10616	PIPE COMP	1		65	D10607	• CLAMP	1	
2	D10107	SHAFT	1		66	D10667	• SCREW	4	M5x35
3	D10561	GEARCASE ASSY	1		67	1185	• WASHER	4	
4	D10600	• GEARCASE	1		68	1195	• WASHER	4	
5	D10599	• BEARING	1		69	1205	• NUT	4	
6	D10270	• BEARING	1		—	—	—	—	
7	D10550	• SEAL	1		71	T3037-14510	CABLE COMP	1	
8	D10272	• RING	1		72	T3037-14520	CORD COMP	1	
9	D10543	• SHAFT	1		73	6420-14511	TUBE	1	
10	D10542	• GEAR	1						
11	6423-13241	• HOLDER(A)	1		76	T3037-91000	TOOL KIT	1	
12	6423-13250	• HOLDER(B)	1		77	D10332	• DRIVER	1	
13	D10592	• WASHER	1		78	T3037-91310	• SOCKET	1	13x6
14	D10594	• BOLT	1		79	1316	• WRENCH	1	
15	D10541	• PINION	1		80	D10709	• BAR	1	
16	D10580	• BEARING	1		81	T3037-93110	MANUAL	1	
17	D10347	• BEARING	1						
18	D10593	• RING	1						
19	D10349	• RING	1						
20	D10222	• BOLT	1	M5x10					
21	1173	• BOLT	1						
22	1185	• WASHER	1						
23	1195	• WASHER	1						
24	D10351	• BOLT	1	M6x10					
25	1186	• WASHER	1						
26	D10711	HANGER ASSY	1						
27	D10619	• HANGER	1						
28	D10621	• CLAMP	1						
29	1171	• BOLT	1						
30	1205	• NUT	1						
31	D10752	GRIP ASSY	1						
32	D10633	• BODY	1						
33	D10613	• LEVER	1						
34	D10612	• LEVER	1						
35	D10610	• BUTTON A	1						
36	D10611	• BUTTON B	1						
37	D10584	• SPRING	1						
38	D10802	• SCREW	1						
39	D10583	• SPRING	1						
40	D10579	• SPRING	1						
41	D10716	• SWITCH	1						
42	D10800	• CORD	2						
43	D10585	• CABLE	1						
44	1170	• BOLT	2	M5x20					
45	1205	• NUT	2						
46	D10921	• SCREW	3	L20					
47	T3037-12510	PLATE NAME	1						
48	D10560	PLATE CAUTION	1						
49	T3037-12590	No.PLATE	1						
50	D10570	GUARD ASSY	1						
51	D10655	• GUARD	1						
52	D10653	• PLATE COMP	1						
53	D10654	• PLATE	1						
54	D10591	• BLADE	1						
55	D10587	• SCREW	1						
56	D10656	• PLATE	1						
57	5223	• BOLT	4	M5x16					
58	1195	• WASHER	4						
59	D10520	COVER(BOLT)	1						
60	D10540	COVER(BLADE)	1						
61	D10081	STRAP ASSY	1						
62	6298-14243	SAW	1						
63	D10571	HANDLE ASSY	1						
64	D10622	• HANDLE	1						



Fig.2 ENGINE GROUP

Key#	PART NUMBER	DESCRIPTION	Q'TY /UNIT	NOTE	Key#	PART NUMBER	DESCRIPTION	Q'TY /UNIT	NOTE
1	4810-12111	CYLINDER	1		73	1918-81170	• SCREW, adjuster	1	
2	4810-12210	GASKET, base	1		74	1850-81530	• SCREW	4	
3	1850-12130	BOLT	2	M5x22	75	5500-81160	• WASHER	1	
4	4810-13161	INSULATOR	1		76	0263-90560	SCREW	2	M5x60
5	4810-13120	GASKET, insulator	1		77	4810-15100	MUFFLER ASS'Y	1	
6	4810-13130	GASKET, carburetor	1		78	4810-15111	• MUFFLER	1	
7	0263-90520	SCREW	2	M5x20	79	4810-15140	• ARRESTER	1	
8	4810-16100	REEDVALVE (S)-A	1		80	01252-30550	BOLT	2	M5x50
9	4810-16110	• VALVECASE (S)	1		81	4810-15410	GASKET	1	
10	4810-16120	• REEDVALVE	1		82	4810-31000	COVER-A	1	
11	4810-16130	• STOPPER	1		83	4810-31100	• COVER-C	1	
12	4810-16170	• SCREW	1	M3x8	84	4810-31110	• • COVER, fan	1	
13	4810-16150	PIRE AIR (S)	1		85	4810-31120	• • DRUM	1	
14	4810-16200	REEDVALVE (F)-A	1		86	04065-02812	• • SNAPRING	1	
15	4810-16210	• VALVECASE (F)	1		87	06004-06001	• • BEARING	1	
16	4810-16120	• REEDVALVE	1		88	04064-01210	• • SNAP RING	1	
17	4810-16130	• STOPPER	1		89	6470-31211	• BRACKET (A)	1	
18	4810-16170	• SCREW	1	M3x8	90	6470-31221	• BRACKET (B)	1	
19	4810-16160	PIPE AIR (F)	1		91	6470-31230	• CUSHION	1	
20	4810-16140	GASKET, valve	2		92	01252-30530	• BOLT	2	M5x30
21	4810-16180	SCREW	6		93	01252-30514	• BOLT	1	M5x14
22	4810-21100	CRANKCASE-C	1		94	5500-85510	SCREW	1	M5x16
23	2629-21130	• PIN	3		95	0263-90520	SCREW	4	M5x20
24	4810-21140	GASKET	1		96	4810-32111	COVER, engine	1	
25	06030-06001	BEARING	2		97	4810-12310	PLATE	1	
26	4810-21210	SEAL	1		98	0263-90510	SCREW	2	M5x10
27	1850-21220	SEAL	1		99	1140-51111	SHOE	2	
28	04065-02812	SNAP RING	1		100	1600-51223	SPRING	1	
29	01252-30530	BOLT	3	M5x30	101	1140-51250	SCREW	2	
30	4810-22110	GUARD	1		102	1140-51230	WASHER	2	
31	0263-90510	SCREW	1	M5x10	103	1970-51241	WASHER	2	
32	4810-41110	PISTON	1		104	4810-72110	CAP	1	
33	5910-41210	RING	2		105	1900-72120	SPRING	1	
34	1600-41310	PIN	1		106	4810-71240	CORD	1	
35	1260-41320	RING	2		107	4810-71250	CORD, earth	1	
36	1140-41330	BEARING	1		108	2850-71320	TUBE	1	
37	1101-41340	WASHER	2		109	4810-73110	PLUG	1	
38	4810-42000	CRANKSHAFT-C	1		110	4810-72120	GROMMET	1	
39	1650-43230	NUT	1		111	4810-75100	RECOIL ASS'Y	1	
40	1000-43240	KEY	1		112	4500-75120	• REEL	1	
41	5501-71110	ROTOR	1		113	4500-75150	• SCREW	1	
42	4810-71200	COIL-A	1		114	1850-75130	• SPRING, spiral	1	
43	4810-71220	• CORD	1		115	4500-75180	• COLLAR	1	
44	2616-71320	• CAP	1		116	4500-75190	• ARM	1	
45	1260-71261	SPACER	2		117	4810-75160	• ROPE	1	
46	4500-72150	BOLT	2	M4x22	118	3330-75421	• KNOB	1	
47	4810-81001	CARBURETOR ASS'Y	1		119	4810-75170	• PLATE, stopper	1	
48	4810-06030	• REBUILD KIT	1		120	4500-75210	PULLEY	1	
49	4810-81450	• • BODY ASS'Y	1		121	5500-85510	SCREW	2	M5x16
50	—————	• • • SCREEN	—		122	4810-82100	BODY ASS'Y	1	
51	—————	• • • VALVE	—		123	4810-82130	• PLATE, choke	1	
52	—————	• • • SPRING	—		124	5500-82140	• LEVER, choke	1	
53	—————	• • • SCREW	—		125	2630-33610	• SCREW	1	
54	—————	• • • PIN	—		126	4810-82170	ELEMENT	1	
55	—————	• • • LEVER	—		127	4810-82180	SCREEN	1	
56	4810-06020	• • GASKET KIT	1		128	4810-82200	COVER ASS'Y	1	
57	—————	• • • DIAPHRAGM	—		129	5500-82221	• KNOB	1	
58	—————	• • • GASKET, diaphragm	—		130	T1504-85000	TANK ASS'Y	1	
59	—————	• • • DIAPHRAGM, pump	—		131	T1015-85200	• CAP ASS'Y	1	
60	—————	• • • GASKET, pump	—		132	4500-85300	• • HOLDER-A	1	
61	4810-81130	• • • RING	1		133	4500-85220	• • PACKING	1	
62	1850-81490	• BODY, purge	1		134	3317-57242	• • STOPPER	1	
63	1850-81520	• COVER, pump	1		135	4810-85300	• PIPE COMP.	1	
64	1751-81510	• PUMP, priming	1		136	5500-85400	• FLTER ASS'Y	1	
65	4810-81250	• JET	1		137	1260-85460	• CLIP	1	
66	1751-81240	• O-RING	1		138	5500-85510	SCREW	3	M5x16
67	1751-81130	• RING	1		139	T1504-75410	LABEL, recoil	—	
68	1881-81140	• SWIVEL	1		140	T1504-31130	LABEL, cover	1	
69	—————	• VALVE ASS'Y	—		141	4810-31911	GUARD	1	
70	1752-81110	• SCREW	2		142	0263-90525	SCREW	2	
71	5500-81120	• BRACKET	1		143	1950-86120	CLIP	1	
72	1751-81180	• NUT, adjuster	1						